



**DONAHUE  
ASSOCIATES**

COMMERCIAL REAL ESTATE ADVISORS

802-862-6880

www.donahueassociatesvt.com

**FOR LEASE  
OFFICE SPACE**

**Maple Tree Place,  
Williston, Vermont**



**SUMMARY**

**2nd floor office spaces available—**

**Building C** - Former corporate regional offices for two national companies with views overlooking the plaza green and mountains or take advantage of suite with in place work stations. Nearby are Best Buy, Torrid, Agave, AAA, McGillicuddy's, and Grazers along with many others. Combine suites to get up to 11,749 SF of ready to lease office space.

Suites available -5,394 SF AND 6,355 SF

**Building F** -Two suites with the larger suite enjoying ample natural light, windows overlooking the green and a mix of private offices and open flex space. Available suites are -

Suite 240— 6,685 SF                      Suite F12—1,221

**Lease Price:** - 22.00/SF GROSS

**Overview:** Offices offer a mix of open layouts, private offices, great natural light and easy access to the shops and amenities that Maple Tree Place has to offer! Enjoy easy access to I-89 and Taft Corners.

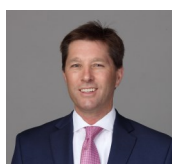
Maple Tree Place is favorably positioned in the market and includes an attractive mix of dining, shopping, and entertaining with a state-of-the-art movie complex and family-friendly events. With a strong mix of retailers including the Shaw's, Best Buy, Ulta, and Dick's Sporting Goods, Starbucks, Bliss Bee, Gamestop, Guitar Center, Agave, McGillicuddy's, Grazers, I Heart Mac and Cheese, Torrid, and Carters Maple Tree Place continues to attract an audience from both local and neighboring areas. Additionally, the center hosts a concert series each summer with live music, dancing, and dinner.

**Zoning:** Taft Corners Zoning District - Retail, General Office, Medical Office, Family/Child Care, Professional Business Services, Technical and Scientific Services, Arts, Entertainment, and Recreation.

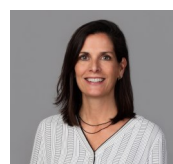
**CONTACT US**



www.donahueassociatesvt.com



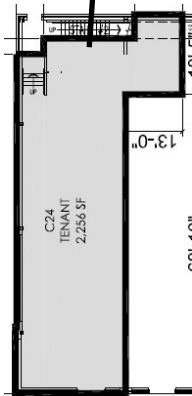
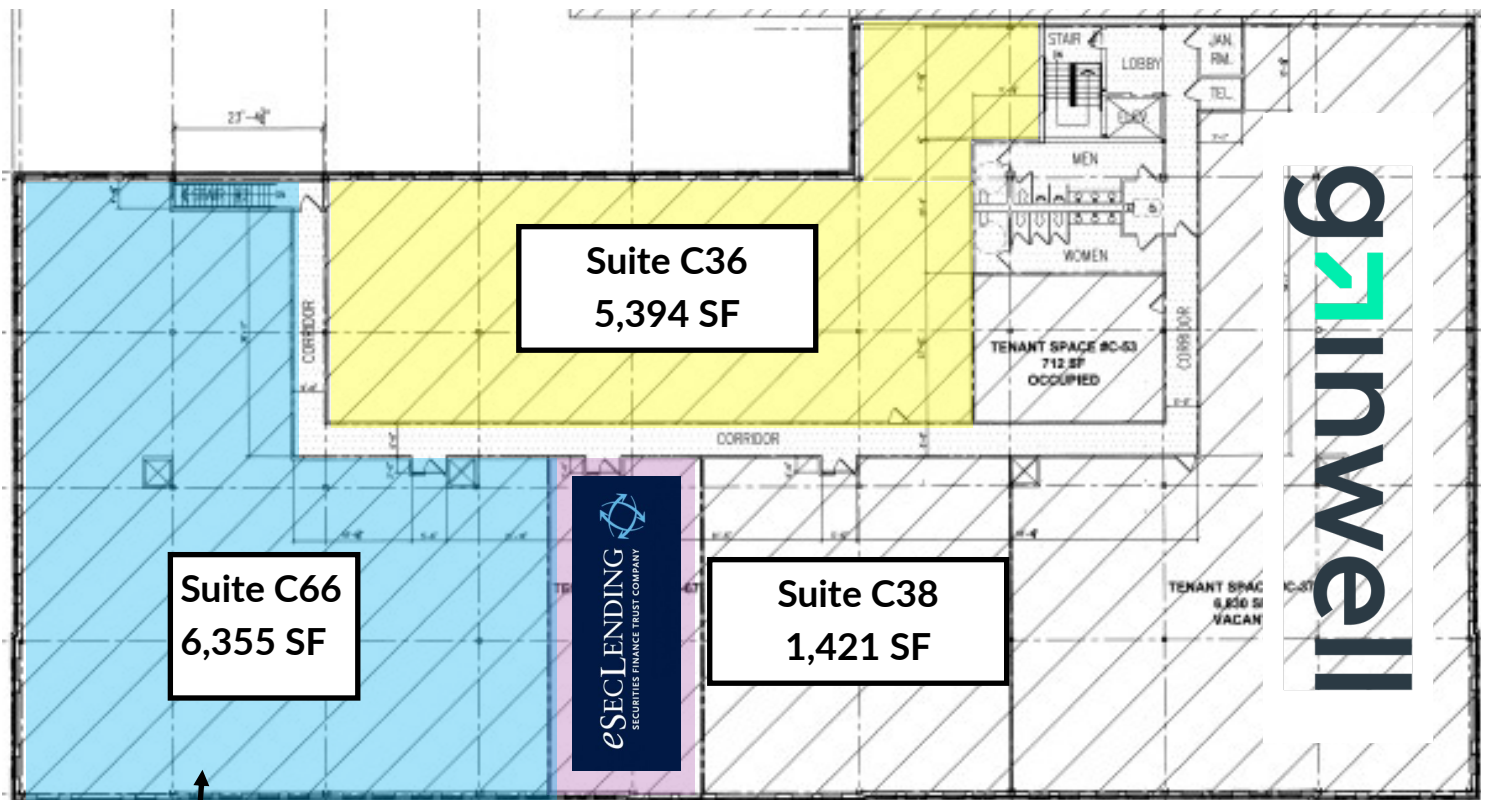
**Steve Donahue**  
Steve@donahueassociatesvt.com  
(802) 862-6880



**Meg McGovern**  
Meg@donahueassociatesvt.com

**FOR LEASE/  
 OFFICE SPACE**  
**Maple Tree Place, Williston, 05495 VT**

**FLOOR PLAN—2nd**



Below the 6,355 SF Second Floor  
 First floor -2,256 SF retail/office

**Building C**  
*28 Walnut Street*  
 Suite C36—5,394 SF  
 Suite C66—6,355 SF  
 Suite C38—1,421 SF

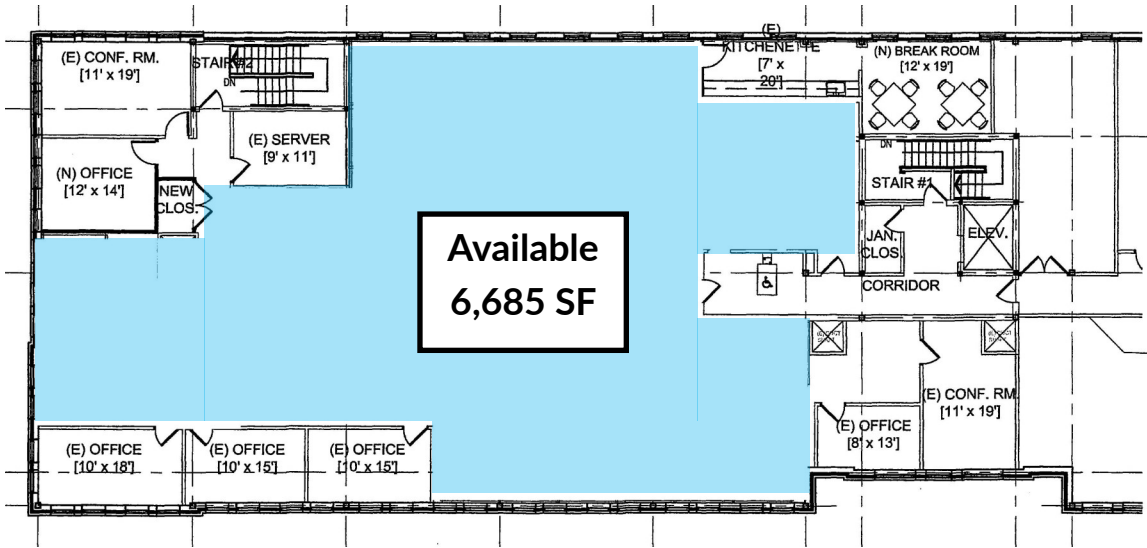


**DONAHUE ASSOCIATES**  
COMMERCIAL REAL ESTATE ADVISORS

**FOR LEASE/  
OFFICE SPACE**  
Maple Tree Place, Williston, 05495 VT

**FLOOR PLAN - Building F**

**Building F—Suite 240**



**Building F**  
121 Connor Way  
Suite 240 — 6,685 SF  
Suite F11—1,221 SF

**Building F—Suite 12**





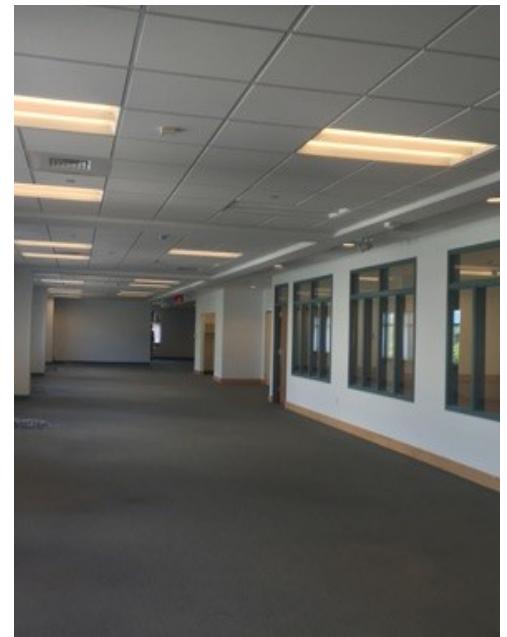
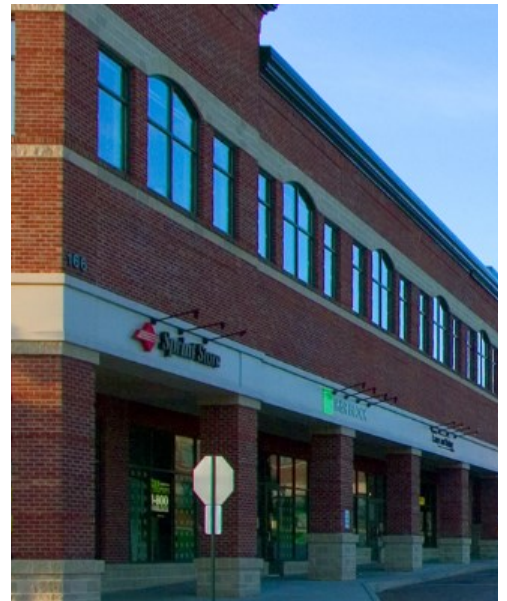


**DONAHUE**  
**ASSOCIATES**  
COMMERCIAL REAL ESTATE ADVISORS

**FOR LEASE/  
OFFICE SPACE**

**Maple Tree Place, Williston, 05495 VT**

**PHOTOS**





**DONAHUE ASSOCIATES**  
COMMERCIAL REAL ESTATE ADVISORS

FOR LEASE/  
OFFICE SPACE

Maple Tree Place, Williston, 05495 VT

CURRENT TENANTS

